



# SCOUTING GUIDE TO COVID-19



## A GUIDE FOR YOUR ROVER SCOUT UNIT

Scouts NSW abides by and always endorses the current NSW Health Public Health Orders. All Scouts NSW guidelines should be read in association with the NSW Health Guidelines and Laws. In the event of a discrepancy or conflict in directions, the NSW Government and NSW Health guidelines takes precedence.

Please ensure you check the latest NSW Health Guidelines and Laws applicable to your area before any Scouting meeting. You can search for the address of your hall or venue for specific rules and restrictions applicable to that area by visiting <https://www.nsw.gov.au/covid-19/rules>.

## IMPORTANT LINKS

NSW Public Health Orders:

<https://legislation.nsw.gov.au/information/covid19-legislation/general>

Scouts Australia Vaccination Policy:

<https://scouts.com.au/members/key-resources/>

Scouts NSW – Scouting Guide to COVID-19

<https://www.nsw.scouts.com.au/members-services/health-and-safety/scouting-guide-to-coronavirus/>

### QUESTION NOT ANSWERED?

If your question is not answered in this document and the NSW Government Public Health Orders do not make sense, you can request further assistance or information by emailing:

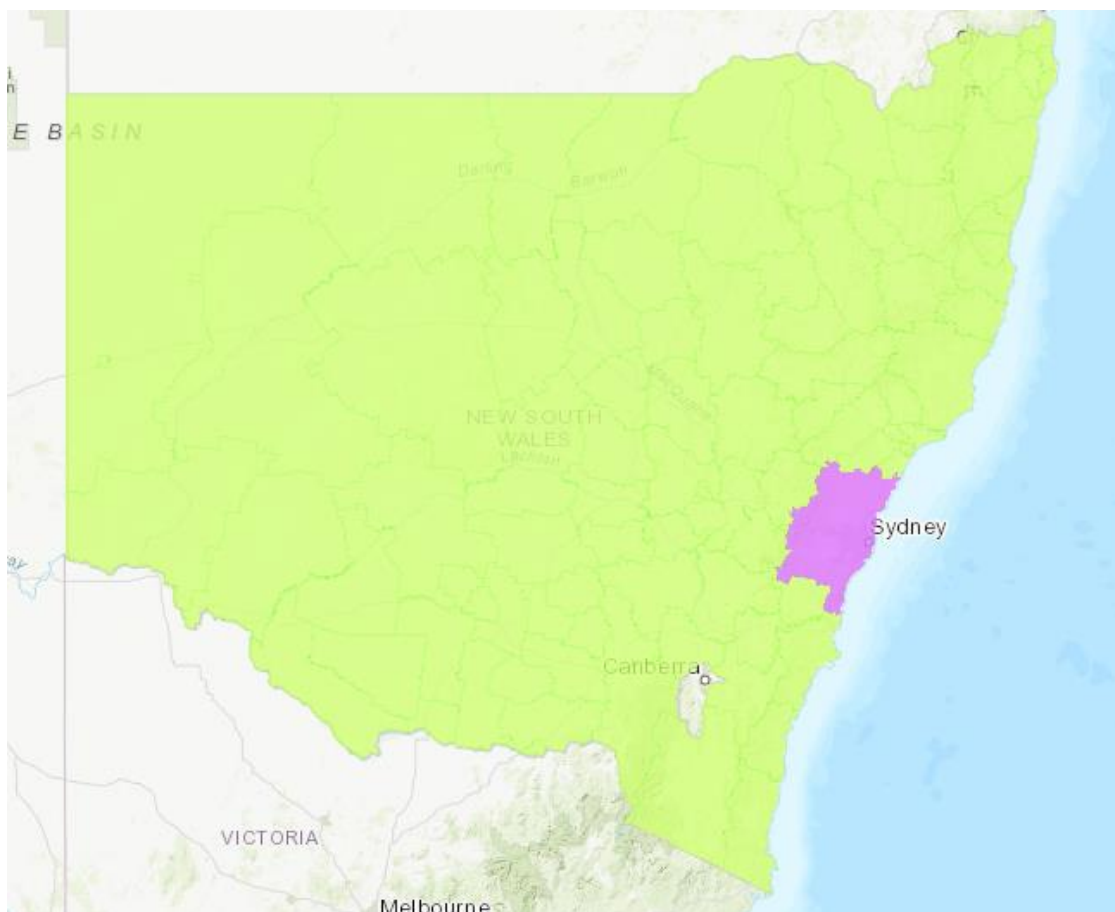
[COVID.Scouting@nsw.scouts.com.au](mailto:COVID.Scouting@nsw.scouts.com.au)



# SCOUTING GUIDE TO COVID-19

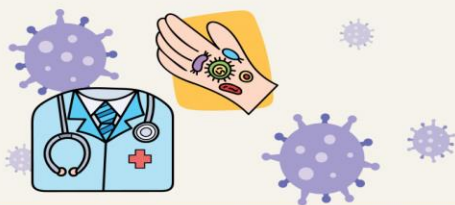


## REGIONAL & RURAL NSW & GREATER SYDNEY



Greater Sydney means the following—

- the Greater Sydney Region within the meaning of the Greater Sydney Commission Act 2015,
- the Central Coast local government area,
- the City of Shellharbour local government area,
- the City of Wollongong local government area.



# SCOUTING GUIDE TO COVID-19



## WHO NEEDS TO BE VACCINATED?

### (GREATER SYDNEY)

Scouts NSW supports the Scouts Australia Vaccination Policy. This policy is to be read in conjunction with the NSW Public Health Orders which take precedence.

To meet at Scouts, all members aged 16 and above will need to **have received two doses** of a COVID-19 vaccine. Any person aged 16 and above who has not been fully vaccinated is required to comply with the NSW Government stay-at-home orders.

At all times, all reasonable steps must be taken to provide a safe environment for all. Reasonable steps include but are not limited to a risk management plan, COVID Safe Plan, Service NSW QR codes, wearing of face masks, physical distancing, hand washing and sanitation, and discouraging anyone feeling unwell from attending the event. These reasonable steps should be documented per activity.

### (REGIONAL AND RURAL NSW)

Scouts NSW supports the Scouts Australia Vaccination Policy. This policy is to be read in conjunction with the NSW Public Health Orders which take precedence.

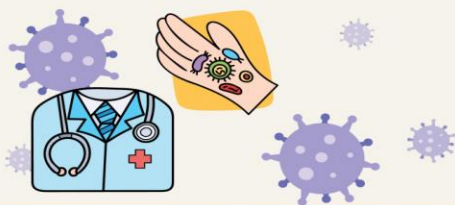
To meet at Scouts, several conditions must be met.

- a) The Scout Hall or activity location **MUST** be outside the Greater Sydney area.
- b) The adult (person aged 16 and above), **MUST** reside outside the Greater Sydney area.
- c) The adults (person aged 16 and above) **MUST** have received **at least one dose** of a COVID-19 vaccine.
- d) The adult (person aged 16 and above) **MUST** hold an Adult Appointment in ScoutLink and be in attendance in that Adult Appointment role.

**Example:** A 24-Year-Old Rover Scout who holds a Rover Scout Unit Leader appointment, can attend Rover Scouts in a Leadership (responsible) capacity, providing they meet the above (a-d) requirements.

**Example:** A Rover Scouts partner offers to assist at Rover Scouts. They do NOT hold an Adult Helper appointment in ScoutLink. The partner is not permitted to attend Scouts.

**Example:** A 23-Year-Old Rover Scout, who holds a Cub Scout Leader appointment, and meets criteria (a-c) above, **CANNOT** attend Rover Scouts with one dose of a COVID-19 vaccination. They must have received 2 doses of a COVID-19 Vaccination. This is because they are



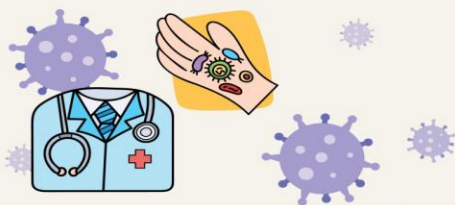
# SCOUTING GUIDE TO COVID-19



not considered an Adult Appointed Leader when they attend Rover Scouts as a Rover. To attend Rover Scouts, all Rover Scouts aged 16 and above will need to **have received two doses** of a COVID-19 Vaccine.

Any person aged 16 and above who has not been fully vaccinated is required to comply with the NSW Government stay-at-home orders.

At all times, all reasonable steps must be taken to provide a safe environment for all. Reasonable steps include but are not limited to a risk management plan, COVID Safe Plan, Service NSW QR codes, wearing of face masks, physical distancing, hand washing and sanitation, and discouraging anyone feeling unwell from attending the event. These reasonable steps should be documented per activity.



# SCOUTING GUIDE TO COVID-19



## The following applies to Greater Sydney AND Regional and Rural NSW

### HOW MANY ROVER SCOUTS CAN MEET?

Scouts Halls in NSW can be considered a **recreation facility (indoor)**. This means a building or place used predominantly for indoor recreation, whether or not operated for the purposes of gain, including a squash court, indoor swimming pool, gymnasium, table tennis centre, health studio, bowling alley, ice rink or any other building or place of a like character used for indoor recreation, but does not include an entertainment facility, a recreation facility (major) or a registered club (a club that holds a club licence under the Liquor Act 2007).

If your hall is in a Stay-at-Home area, you **MUST NOT** open for Scouts, and you must stay home. This applies for indoor and outdoor gatherings. Please use the Scouting@Home activities to keep your Unit active.

#### Meeting in the hall:

No more than 20 people can meet at the Scout Hall at any time. There is also a density limit of 1 person per 4sqm. This calculation is applied to each individual room of the Scout Hall, including kitchens, dens, and bathrooms.

#### Example: Your hall measures the following:

Main Hall: 10M x 15M = 150m<sup>2</sup> (37 people maximum in this space)

Leaders Den: 3M x 3M = 9m<sup>2</sup> (2 people maximum in this room)

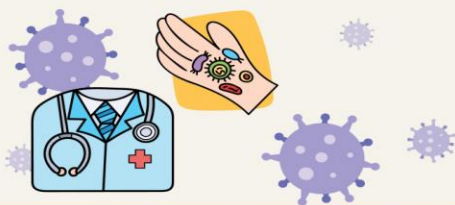
Bathroom: 2M x 3M = 6m<sup>2</sup> (1 person maximum in this room)

With the above example, the Scout Hall is limited to a maximum of 20 people attending any time to be compliant with the Public Health Orders. This is regardless of the density calculations. If the hall was 5M x 10M (50m<sup>2</sup>), a maximum of 12 people could be in attendance because this is all the density limit permits.

Anyone aged 12 years and above must wear a facemask while indoors and all participants must always adhere to 1.5m physical distance between themselves and others.

#### Meeting outside e.g. in a park, sports field, bush area

A maximum of 50 people (regardless of age) can gather in outdoor settings. At all times during the activity, anyone aged 12 years and above must carry a facemask and wear this when physical distancing is difficult. All members must always adhere to 1.5m physical distance between themselves and others.



# SCOUTING GUIDE TO COVID-19



## DO WE NEED TO WEAR A MASK?

Indoors:

All Members aged 12 years and above must always wear a mask while indoors. The facemask must be worn so that it covers the person's nose and mouth.

Members can remove their facemasks for the following exceptions:

- Where they carry evidence such as a medical certificate or other written evidence by a registered health practitioner or an NDIS provider
- While eating or drinking
- When communicating with someone who is deaf or hard of hearing
- Where it is not safe to wear the face covering
- Because of an emergency.

Outdoors:

At all times during outdoor gatherings, members must carry a mask and should wear this when physical distancing is difficult.

## DO WE NEED TO CHECK-IN?

Scouts NSW venues and halls are required to display and use the NSW Government QR code so members and visitors can check in using the Service NSW app. All adults MUST check-in using the Service NSW QR Code. Where possible, users of smart devices should use this process to check-in and check-out of the venue.

If it is not possible for a person to check in using a device, there must be an alternate sign-in method. The alternate sign-in method must record the contact details of the person and be retained for at least 28 days. Scouts NSW must provide this to NSW Health, if requested within 24 hours in a digital format.

Scouts NSW recommends and prefers the use of the Service NSW Business Online Web Check-in form (over manual processes) to check in participants who are unable to self-check-in using the QR Code. Information about this facility can be found by logging into the Business (Scout Hall Venue) registration for the COVID Check-In QR Code. This facility also allows for venue administrators to scan individuals in using their NSW Health Card. The venue admin should share the link and credentials to the Business Online form with all Section Leaders who may need to use this function.



# SCOUTING GUIDE TO COVID-19



## DO WE NEED A COVID MARSHAL?

Yes, a COVID Check-in Marshal is required for all activities. A COVID Check-in Marshal can be a nominated Leader, Rover Scout or Adult Helper who is responsible for ensuring that all attendees check-in using a QR Code or attendance record. The COVID Check-In Marshal can undertake other activities, but their primary responsibility should be to ensure all attendees check-in.

## CAN MY ROVER SCOUTS TRAVEL?

Domestic travel within NSW is permitted. Members from Greater Sydney are NOT permitted to travel to Regional or Rural NSW. People from Regional and Rural NSW are not permitted to enter Greater Sydney.

Carpooling is permitted where the adults (people aged 16 and above) in the car have received two doses of a COVID-19 vaccine. These adults need to:

- carry evidence of their name and address.
- carry vaccination evidence.
- be able to produce this evidence to a Police Officer or authorised officer on request.

Scouts NSW two deep leadership MUST be adhered to policy when transporting youth members.

For transporting children under the age of 16 who are not fully vaccinated, they can travel in a vehicle with another person who they do not live with. They do not have to carry or produce evidence of their name and address.

## CAN MY ROVER SCOUTS CAMP?

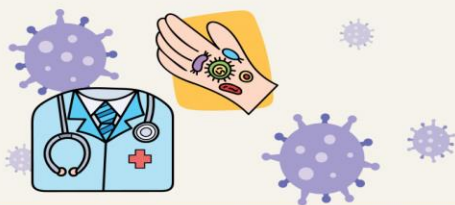
YES – Rover Scouts can camp.

When camping, NSW Government Legislation requires members of Scouts NSW to follow the 1 person per 4sqm rule. Rover Scouts can sleep in tents or indoor accommodation where the 1 person per 4sqm rule can be maintained. The exception to this would be when the Rover Scout is camped with their normal household members.

Rover Scouts must be fully vaccinated (have had two doses of a COVID 19 vaccine) to camp. Rover Scouts must observe the 1 person per 4sqm rule in tents and indoor accommodation.

Bunk accommodation can be used, only where there is one person using each double bunk.

Scouts NSW requirements for Child Protection in relation to adults over the age of 18, attending overnight activities MUST be followed. This includes the need for a Working with Children Check and M5 form to and submission of an A2 for as per [PRO11 Working With Children Checks \(WWCC\)](#).



# SCOUTING GUIDE TO COVID-19



## CAN MY ROVER SCOUTS BUSHWALK?

YES – Rover Scouts can go on a bushwalk.

A maximum of 50 people can attend the bushwalk. All members must remain physically distanced with 1.5m between participants during the activity.

Scouts NSW recommends each participant brings their own food and drink and does not share these items with others. Frequent handwashing with soap and running water, along with the use of hand sanitiser is strongly encouraged.

Scouts NSW Bushwalking Activities Procedures must always be followed as per [PRO41 Bushwalking Activities SOP](#).

## A ROVER SCOUT IS UNWELL

Rover Scouts should not attend the Unit meeting if they feel unwell. We know this can be upsetting for our Rover Scouts, but if they are unwell they should stay home and get better, to ensure when they return to the Unit Meetings they can participate fully.

If a Rover Scout becomes unwell whilst at the Unit Meeting, Responsible Rover Scouts should contact the parent, partner, or caregiver and organise to have the Rover Scout picked up.

## COVID SAFE CLEANING

The area in which you meet should be kept clean and tidy. Washing hands with soap under running water and using disposable hand towels can help keep our members healthy and safe. Hand sanitiser should be made available and used frequently.

Participants may choose to wear gloves when encountering frequently touched surfaces such as door handles, handrails, tabletops, light switches, shared equipment, shared tools, telephones, kitchen equipment, sinks, basins, bathrooms, and toilets. Frequently touched surfaces should be cleaned and regularly disinfected by hand. Use detergent solution and disinfection (follow instructions) or scrub by hand using detergent/disinfectant wipes.

## A MEMBER IS A CLOSE CONTACT

If one of your Rover Scouts or Leaders is considered a Close Contact by NSW Health, they will need to follow the guidance and advice of NSW Health. They should not attend the Rover Scouts Unit meeting until they have been cleared by NSW Health.

## A MEMBER HAS COVID

If one of your Rover Scouts or Leaders has been diagnosed with COVID they must not attend the Rover Scout Unit meeting. NSW Health will issue directives to the individual and perform





# SCOUTING GUIDE TO COVID-19



contact tracing. Everyone must follow the guidance and advice of NSW Health. They should not attend the Rover Scout Unit meeting until they have been cleared by NSW Health.

You will need to contact your Region Commissioner and Region Office to make them aware of the positive member. They will be able to assist you with support as needed. It is also recommended this positive case be logged in the Scouts NSW WHS Platform as an 'incident', not to be investigated but to be noted formally.

## **I HAVE COMPROMISED IMMUNITY**

If you, one of your Leaders or Rover Scouts has compromised immunity (e.g. is currently receiving chemotherapy treatment) the Unit Council may make the decision to mandate everyone in attendance at a Rover Scout Unit meeting must be vaccinated. Equally, you can suggest, for their own safety, the individual with compromised immunity not attend a specific Unit Meeting. It is important to ensure any decision is fair and equitable for all members and made considering the Scouts Australia Vaccination Policy.

## **CAN WE HAVE A LARGER ACTIVITY?**

A maximum of 50 people (regardless of age) can gather in outdoor settings. All members should be physically distanced remaining 1.5m apart during activities. This means if you wish to have a District Activity, it can only be done only where the gathering size does not exceed 50 people. This includes youth members, Leaders, and adult assistants.

A COVID-19 safe outdoor public gathering can be held for up to 200 people. To have a COVID-19 safe outdoor gathering, the Leader-In-Charge MUST:

- develop a COVID-19 Safety Plan for the specific event used the Approved COVID-19 Safety Checklist for Outdoor Events ([Outdoor events | COVID-19 Safety Plan | NSW Government](#)), and
- comply with the play, and
- keep a copy of the plan at the premises where the event is being held during the event, and
- make the plan available for inspection by a police officer or authorised officer
- have received approval of the COVID-19 Safety Plan by the host Region Commissioner or their nominated delegate prior to the event, and
- submit their COVID-19 Safety Plan to the Scouts NSW WHS & Risk Manager prior to the event.

## **CHECKING A VACCINATION STATUS**

Although there is no requirement for the formation or activity Leader in charge to check the vaccination status of every member, it is acceptable to ask for proof of vaccination for activity participants aged 16 and above. All members are expected to follow the Scout Law and the Law of NSW and be honest about their vaccination status. All adults MUST check-in using the Service NSW QR code which, in time will also show an individual's vaccination status.

## **REFUSAL TO AN UNVACCINATED PERSON**

The Leader in charge of an event, activity or Rover Unit Meeting must take reasonable steps to ensure that an unvaccinated adult is not on the premises.



# SCOUTING GUIDE TO COVID-19



Reasonable steps mean, as appropriate, stopping, preventing an unvaccinated person being on the premises. Personal safety must take priority and the Leader in charge should contact authorities if their safety, or the safety of the participants is compromised. Ensure you follow the Scouts NSW [Report a WHS Incident](#) for any contact with authorities or any inappropriate altercation. An altercation can be considered a near miss as it might potentially lead to personal injury and MUST be reported.

## SHARING EQUIPMENT

At a Rover Scout Unit meeting it is common to share equipment such as ropes, compasses, balls, and stationery. Where possible, items should be cleaned and disinfected prior to use and before being put away. Rover Scouts and other members touching these items should wash and dry their hands after use and apply hand sanitiser. Where possible, members should use their own pens and pencils, phones, and drink bottles rather than communal items at the activity location.

## DO WE NEED A COVID SAFE PLAN?

Yes – Your Scout Hall, Training Room or outdoor activity will need a COVID Safe Plan. The Group Leader or delegate is responsible for completing this plan in conjunction with others. This plan may be the same or like your 2020 plan but should be reviewed to ensure it is in line with current Health Orders and everyone understands the contents of the plan. Please visit [COVID-19 Safety Plan: community centres and halls](#) for the template.

Your plan will be submitted online ([COVID-19 SAFE PLAN for SCOUT HALL](#)) and reviewed / approved by your Region Commissioner.